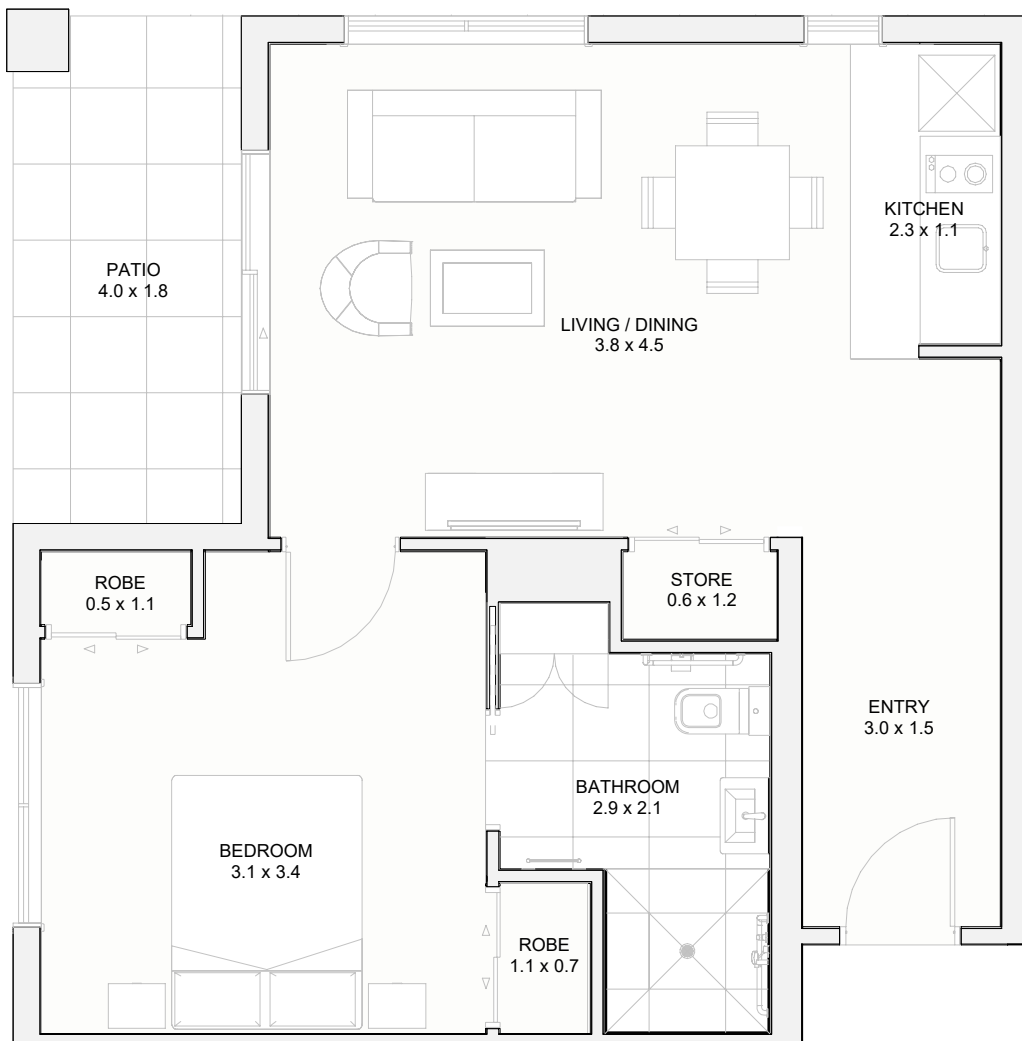


# Serviced Apartment



Type: **Premium G — Mirror (Patio)**

Total floor plan area: **56m<sup>2</sup>**

Number:

Total outdoor area: **7m<sup>2</sup>**

Village:

\$

Price valid until:

Sales Manager:

This sheet provides information for a Summerset apartment. See overleaf for inclusions and specifications for these homes.

ARTISTS IMPRESSION ONLY - The design and make-up of the village may be subject to change at the discretion of Summerset. Design features are subject to change. Patio size and location may vary depending on the exact location and orientation of the home. Total floor plan area is calculated to the exterior wall, or if a joining/internal wall, to the midpoint and may differ from the figure stated depending on the type of cladding used in construction. Room measurements are the total usable area for furnishing, these measurements do not include the door recesses and bay windows. Price stated is for the purchase of a Licence to Occupy. Issued: May 2021.





**Above** | Enjoy living in a welcoming and vibrant community



**Above** | Cook in your kitchenette or have meals delivered



**Above** | Open plan living with room for family and friends



**Above** | Separate double bedroom with a large ensuite

## Serviced Apartment Specifications

### Features

- Call bell system
- Apartments keyed individually
- Double glazing
- Heat pump
- Wall to wall floor coverings (carpets and vinyl)
- Fibre line for telephone and internet
- Wiring for Sky and Freeview
- Storage cupboard with shelving system
- Drapes
- Sheer roller blinds behind drapes
- Letterbox

### Kitchenette

- Cooktop
- Joinery
- Splashback
- Soft close drawers and cupboards
- Space for microwave
- Compact fridge provided

### Bedroom

- Built-in wardrobe organiser

### Laundry

- Shared laundry space

### Bathroom

- Grab rails in shower and toilet
- Heated towel rail
- Underfloor heating
- Adjustable height shower head
- Wall mounted vanity
- Wall mounted mirror cabinet
- Shower curtain
- Slip resistant tiles

### Exterior

- Outdoor patio area or balcony (where included)

You supply your own microwave, Freeview or Sky decoder, telephone and modem.

**Please contact your sales manager for information on extras available.**