

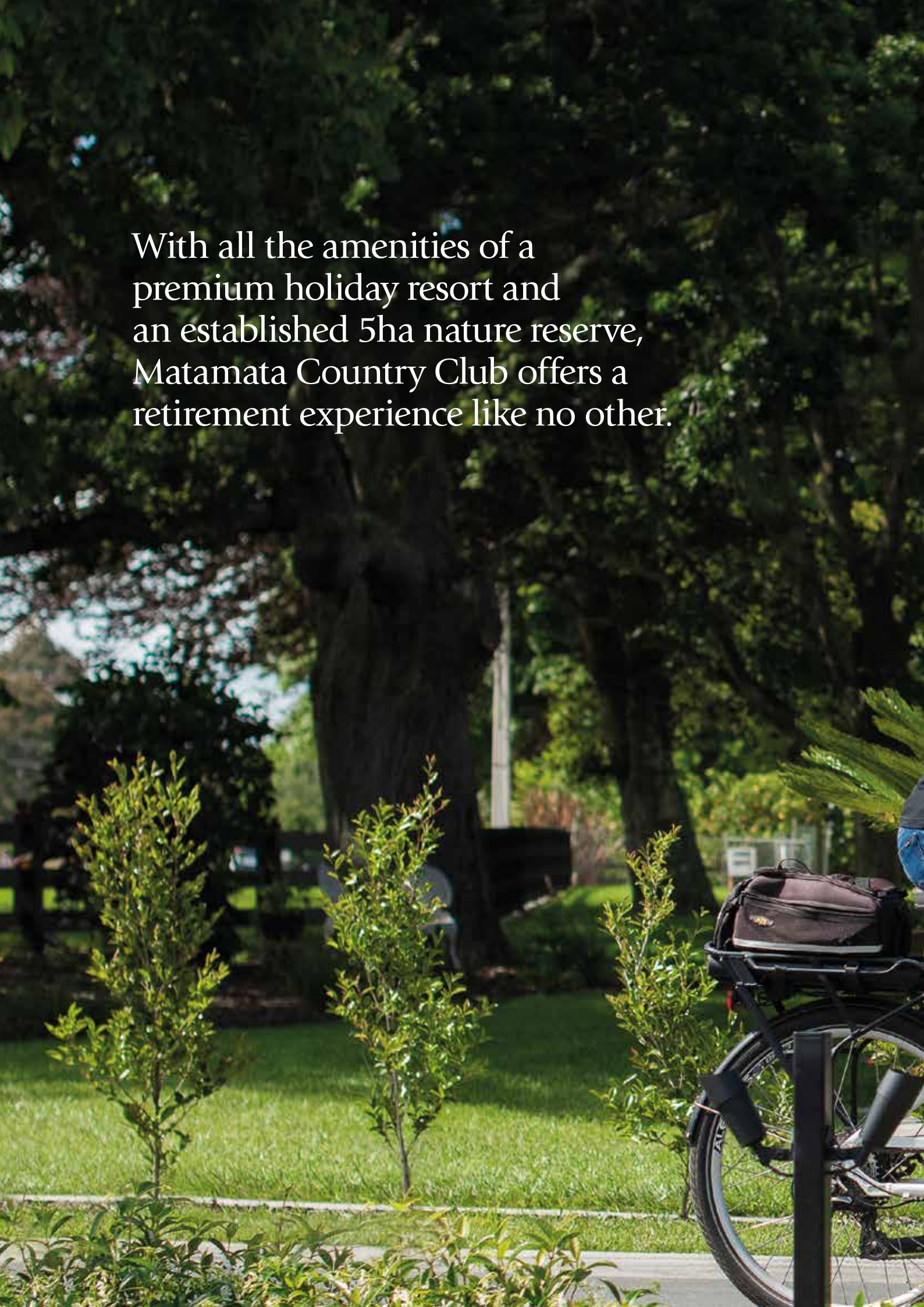


Matamata Country Club



Sanderson
GROUP

With all the amenities of a premium holiday resort and an established 5ha nature reserve, Matamata Country Club offers a retirement experience like no other.







Matamata Country Club boasts unique open spaces with mature trees creating a park-like environment that make this country club more 'country' than most. So, if you love being surrounded by nature you'll find living here an absolute delight.



Every day's filled with moments to treasure

With the same design philosophy and luxurious lifestyle that's made Tamahere Country Club iconic in the retirement community, Sanderson Group's latest village signals the dawn of a new era for the Matamata region. With the most beautifully appointed homes, facilities you'd expect to find in a five-star resort and 21ha of park-like grounds, Matamata Country Club offers retirees so much more than just a place to call home.

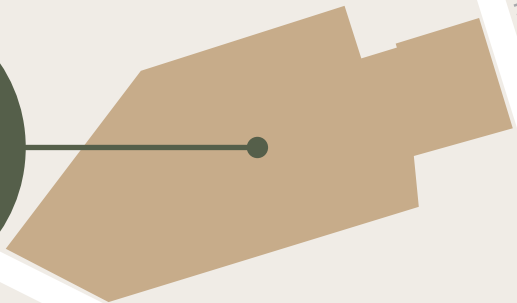
With a rich farming and equine heritage, Matamata is a town with a proud identity and strong community spirit. That wonderful blend of heritage and vibrancy is what makes it the perfect location for luxurious retirement living. With your new village friends and a wider community that's ready to welcome you, you'll feel a sense of belonging and connection here like you've never felt before.

While many retirement villages offer residents facilities for recreation and to socialise, none do it on a scale or to the standard that the Sanderson Group does. That's why Sanderson Group villages are so sought after and have carved out a niche as New Zealand's leading luxury retirement provider.

Facilities planned include:

- Clubhouse
- Movie Theatre
- Library
- Billiards/Pool
- Café
- Bar
- Piano Lounge
- Hobby Shed
- Health Spa including Pool/Gym
- Campervan Parking
- Bowling Green
- Croquet Lawn
- Care Centre
- 5ha Established Nature Reserve





13

2

27

Peria Rd

3

4

7

8

9

10

1

12

11

Firth St

Arawa St

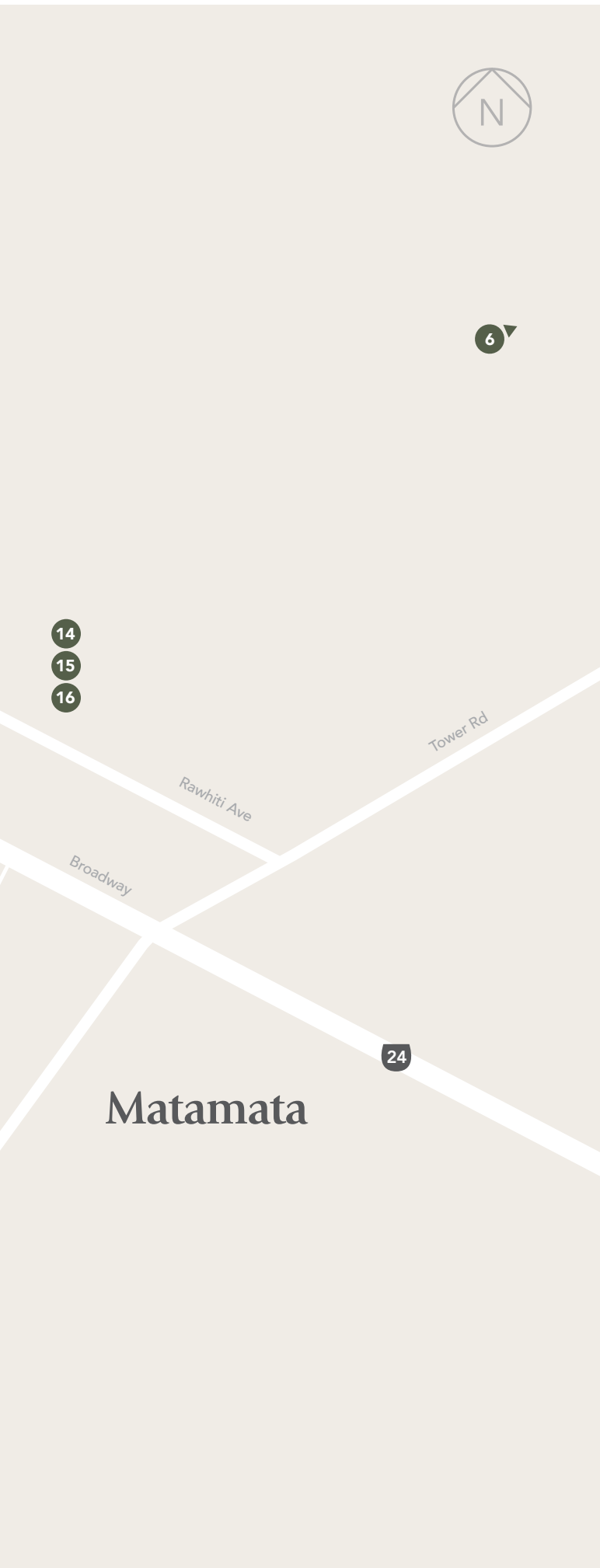
Station Rd

Burwood Rd

27

5





A beautiful community within a community

Retail & Supermarkets

1	Countdown Supermarket	3 mins
2	New World Supermarket	4 mins
3	The Base	52 mins
4	Hamilton CBD	48 mins
5	Cambridge CBD	35 mins
6	Tauranga Crossing	39 mins

Eat & Drink

7	Merchant of Matamata	2 mins
8	Redoubt Bar & Eatery	2 mins
9	Osteria Matamata	3 mins
10	Sofra Restaurant	3 mins

Parks & Sports

11	Bedford Park	3 mins
12	Matamata Domain	3 mins
13	Walton Golf Club	12 mins

Medical

14	Matamata Medical Centre	4 mins
15	Unichem Matamata Pharmacy	4 mins
16	Pohlen Hospital	4 mins

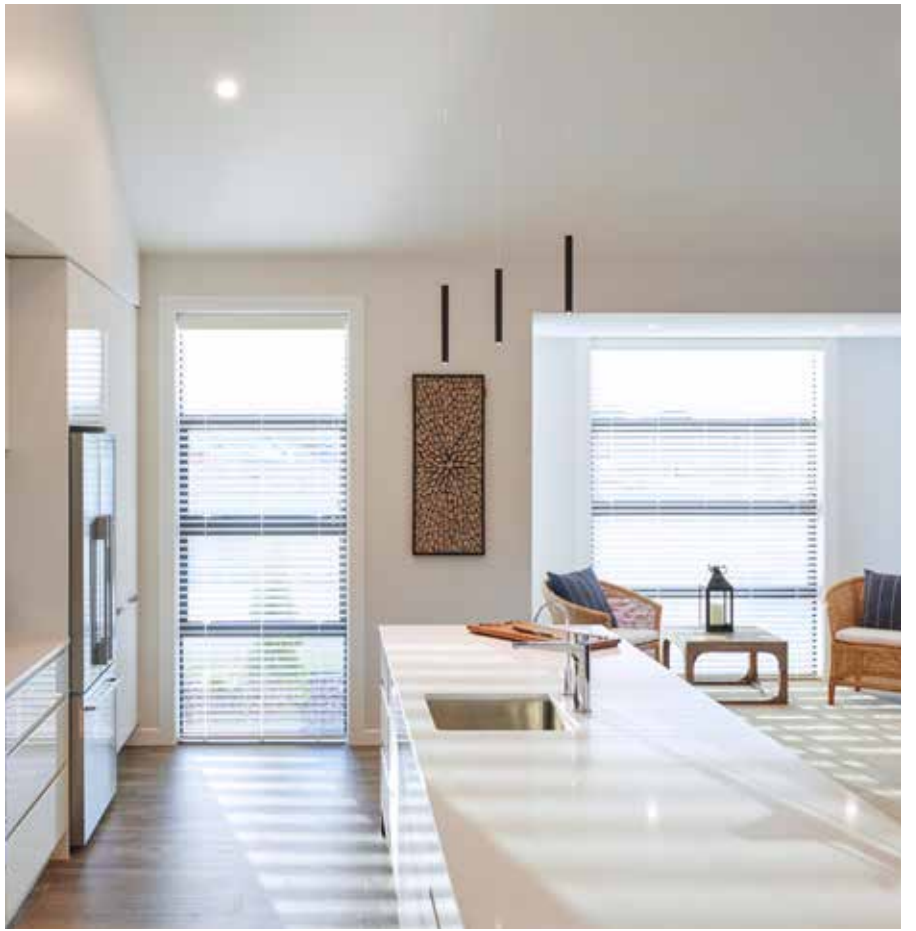
Your new home

Homes at Matamata Country Club are fastidiously built featuring the best fixtures and fittings, and come in a range of sizes and configurations to suit. Two or three bedrooms, double or single garages, offices, on a grand scale or modest - whatever your needs there's a home here that's perfect for you.

Featuring cathedral ceilings, alongside bagged brick and cedar cladding, they have an unmistakably premium look and feel. All are orientated to maximise sun and natural light and with the very best in climate control you'll be living in absolute comfort year-round.

Your new home will feature the designer kitchen you've always dreamed of, double-track curtains and lush premium quality carpet. Beautifully tiled bathrooms are designed for easy living while extra wide doorways and level entry access throughout your home will ensure your ongoing comfort, safety and security.







About the Sanderson Group

Since forming in 1987, we've built a reputation for creating the country's most desirable retirement villages and operating them with the same amount of care for our residents that we show our own family. As we have continued to evolve, we have applied our extensive experience to other large-scale developments including aged care facilities, specialist medical facilities, hospitality, retail, accommodation, education and residential subdivisions.

We continue to be family-owned and operated, with good honest family values governing everything we do.

For more information about Sanderson Group visit sandersongroup.co.nz

Make Matamata Country Club your new retirement address

Our sales team are specialists in retirement living and have a wealth of knowledge when it comes to purchasers' retirement requirements. Call us today to arrange a time to meet and discuss **Matamata Country Club** and how this luxury village can fulfil your retirement dreams.

For more information and viewing of plans please contact our sales team:

Phone: 027 301 3126

Email: sales@matamatacountryclub.co.nz

102 Peria Road, Matamata, Waikato
matamatacountryclub.co.nz

Matamata Country Club is developed and operated
by family owned Sanderson Group.



Sanderson
G R O U P

THE FAMILY NAME IN LUXURY RETIREMENT LIVING

sandersongroup.co.nz

Disclaimer: This project is subject to securing resource consent and any other necessary consents, grants or other steps required to commence the project. The material within this booklet is current as at July 2023 and is subject to change without notice. Every effort has been made to establish the accuracy of the material. However the material is not warranted by the operator and does not form part of any contract. Prospective purchasers are advised to make their own inquiries to satisfy themselves on all aspects. Some photographs and artists impressions are taken from retirement villages developed by Sanderson Group and are for promotional purposes only.