



**2**  
Bedrooms



**2**  
Bathrooms



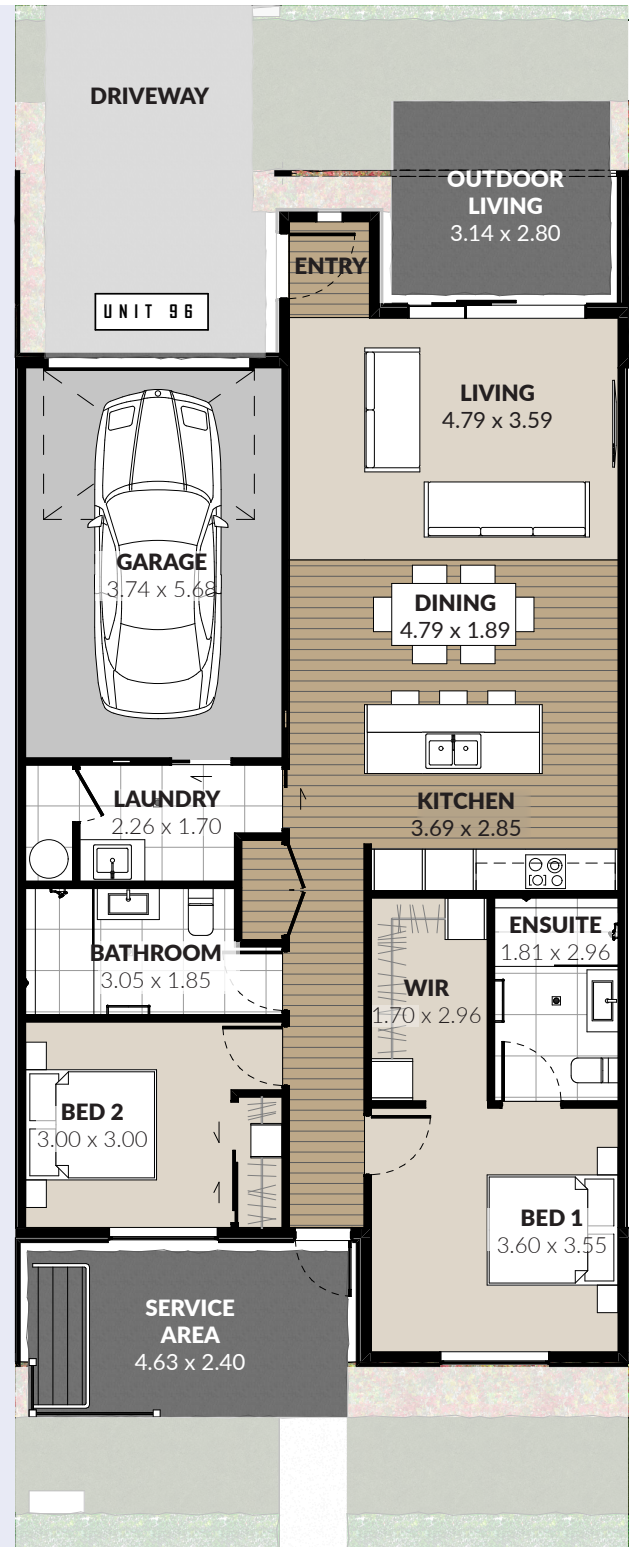
**1**  
Laundry



**1**  
Garage



**126m<sup>2</sup>** (approx)  
Floor Area



Disclaimer: Images of buildings, build interiors and landscaping are artist impressions based on current plans. It is possible that there will be variations between these images and the actual built form assets due to supply.

Our villas are designed to provide you with privacy, independence and choice. Arriving home to The Sterling, Kaiapoi you'll be greeted by a cheerful, open plan living, kitchen and dining area with access to an outdoor patio.

The stylish and functional master bedroom with walk in robe offers ample storage and an ensuite with underfloor heating where you will feel like royalty.

The spacious second bedroom, an additional bathroom, a separate laundry and an internal access single garage adds to the ultimate ease and comfort in this stylish and homely villa.

### Elevation - Front View



### Elevation - Rear View



Disclaimer: Images of buildings, build interiors and landscaping are artist impressions based on current plans. It is possible that there will be variations between these images and the actual built form assets due to supply.

### Features

- Fisher & Paykel appliances:
  - Oven
  - Cooktop
  - Rangehood
  - Dishwasher
- Window coverings
- Heatpump – ducted ventilation and heating
- Fully tiled bathrooms with underfloor heating to ensuite
- Thicker, more insulated external walls and double glazed windows
- Digital television access
- Keyless entry
- Emergency Duress System
- Cathedral ceiling to dining and living (in selected villas)