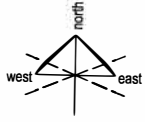
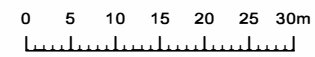


Maryville

COURTS



C O L O M B O S T R E E T

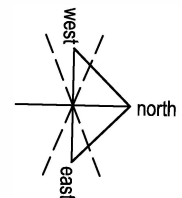
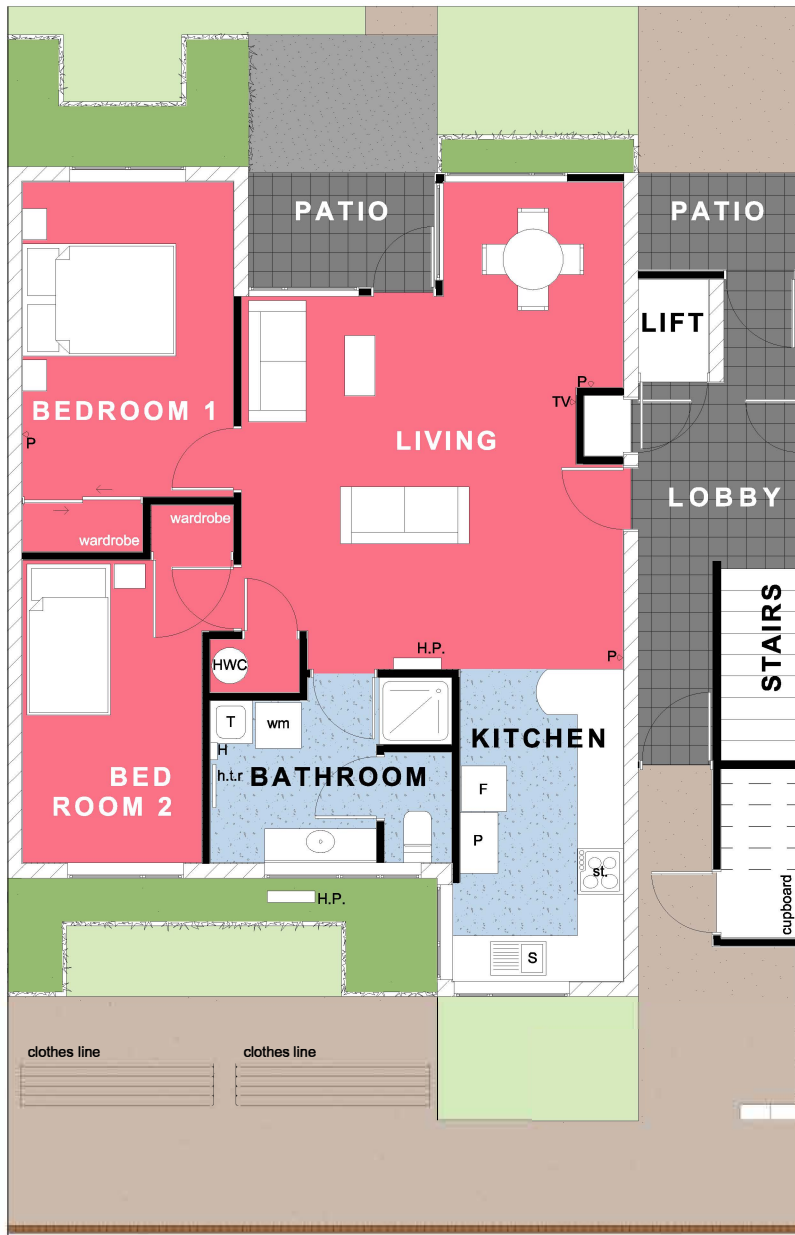


- MARYVILLE COMMUNITY CENTRE
- MARYVILLE COURTS VILLAGE
- ACCESSORY FACILITIES
- A EMERGENCY CONGREGATION AREA
- B LETTERBOXES
- C RECYCLING/ RUBBISH BINS
- D RECEPTION / OFFICE AREA

MAIN ENTRY at 155 SALISBURY STREET

S A L I S B U R Y S T R E E T

M A N C H E S T E R S T R E E T



VILLA 42. Double bedroom

Net Floor Area - 70m²

ROOM LIST

| | |
|----------------|------------|
| LIVING/ DINING | 3.7 x 5.6m |
| KITCHEN | 3.0 x 2.3m |
| BATHROOM | 1.6 x 1.6m |
| LAUNDRY | 3.7 x 1.7m |
| WC | 0.9 x 1.7m |
| MASTER BEDROOM | 2.8 x 4.1m |
| SECOND BEDROOM | 2.4 x 3.9m |

FEATURES

Well appointed kitchen with electric hob, oven, range hood and vinyl floor coverings

Open plan dining and living areas, with carpet floor coverings and heatpump

Bathroom with vanity, shower, heater, heated towel rail and vinyl floor coverings. Seperate toilet off laundry

Main bedroom to accomodate queen bed, single guest bedroom, both with built in wardrobes

Curtains throughout, kitchen blinds

Access via lobby or patio

Patio with garden outlook and clothesline