

Pohutukawa Landing Care Home: New standard for aged care

metlifecare

Metlifecare's state-of-the-art care home at Pōhutukawa Landing has introduced much-needed aged care services to the Beachlands community for the first time. The brand-new facility offers a wide range of premium care suites, including 15 purpose built dementia suites, all thoughtfully designed to provide a warm, family-friendly environment that feels like home.

Offering rest home, hospital and secure dementia care - the facility ensures support and comfort is provided as care needs change.

Pōhutukawa Landing's Business Care Manager, Anna Gildenhuis, says the care home helps fill a critical need in the community.

"Until now, there hasn't been a care option for people in Beachlands. The new care home means locals no longer have to leave the community they love to receive the care they need."

While it has that luxurious, premium quality you'd expect from a new building, it's also designed to feel like home, with plenty of spaces for families and friends. "Residents today want comfort and a touch of luxury from a care home, and that's exactly what we offer."

The secure dementia care suites are thoughtfully designed to ensure safety while encouraging residents to thrive. Its unique features include a beautiful courtyard with raised garden beds and a dedicated kitchen for assisted baking offer personalised experiences, while specialised activities are tailored to meet each resident's needs.

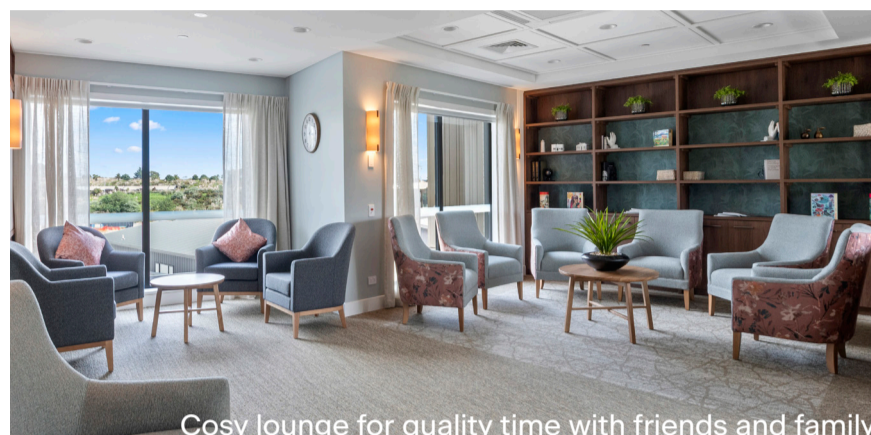
"We take the time to understand each person's passions and support them to continue doing the things they love," Anna adds.

Since welcoming its first resident on 2 October, the care home has generated significant interest from the village's residents and the wider community.

"Our independent living residents are thrilled and gives them peace of mind in knowing that quality care is available right here. They're showing off the facility to friends and family, and many have said they'd be happy to move here if their needs change. There's also been plenty of enquiries from the wider community who are planning ahead."

The location adds to the care home's unique charm. "You drive through peaceful country, coastal scenery and Pine Harbour to get here."

The care home offers a range of accommodation options. The studio suites include an ensuite bathroom, kitchenette with a small



Cosy lounge for quality time with friends and family



fridge and tea-making facilities, and private balcony or patio. For those wanting more space, the larger suites feature the same amenities, plus a separate living area.

Some of the larger suites are big enough to accommodate couples, allowing partners with different care needs to stay together. Residents are encouraged to make their suite their own by adding personal touches and small furnishings.

Anna says she is excited about the new care home team they've built here. "We're all passionate about what we do, and we're committed to providing the very best care."

Setting a new benchmark in both aged care and sustainability, the care home is one of a few in New Zealand to achieve a 6 Green Star Design certification. The building is designed to minimise energy consumption, water usage, waste generation and harmful emissions.

Unlike the traditional funding method for premium care accommodation, care suites are funded with the purchase of an Occupation Right Agreement (ORA) which gives peace of mind, so you know exactly what you're paying upfront, and you have the security of knowing you can afford to stay here long-term. It removes the guesswork of trying to predict how much money will be needed and for how long.