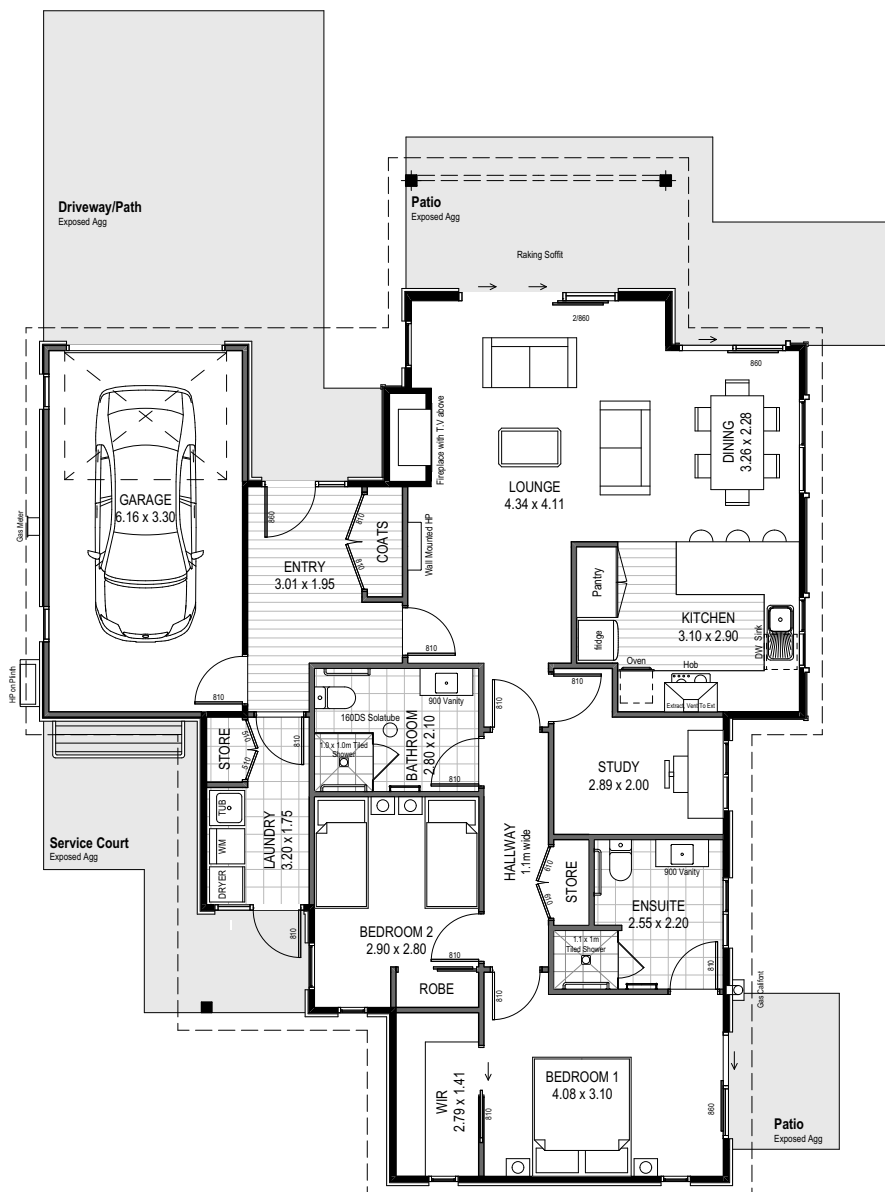


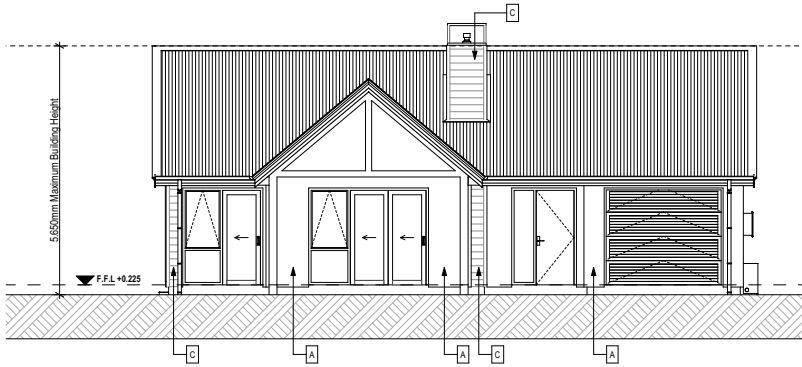
50 Homeward Bound Drive

This delightful two bedroom villa offers a spacious open plan kitchen and living area, with a separate study that provides the opportunity for a home office. The villa has a master wing with walk-in-robe and private ensuite. The full second bathroom will provide you with greater privacy when you have guests to stay. And the separate laundry is another great feature of the Skippers villa.

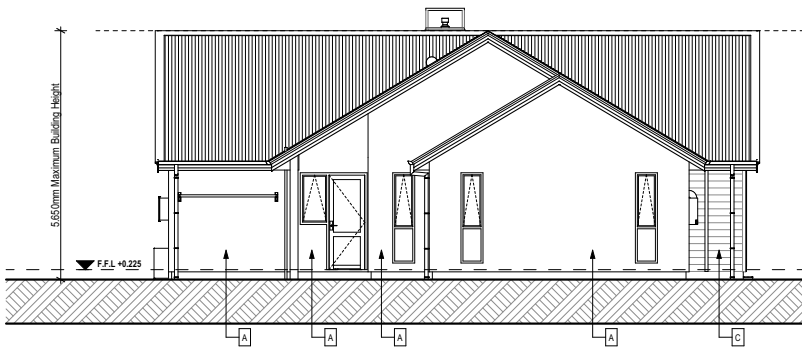
-  139m²
-  2
-  2
-  1
-  Study



Elevations—
50 Homeward Bound Drive



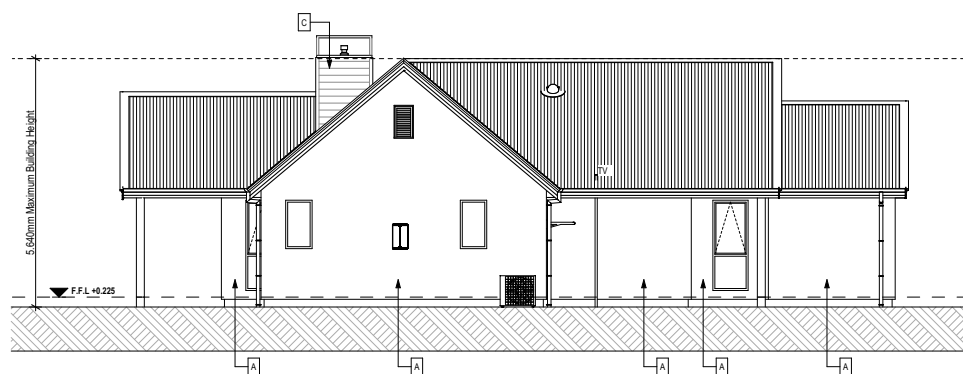
North Elevation



South Elevation



East Elevation



West Elevation

Specifications

Construction & Cladding

- Weatherboard and plaster over aerated autoclaved concrete (AAC)
- Coloursteel roof
- 2.55 m stud height
- Double glazed, thermally broken windows

Interior finishes

- High end fixtures and fittings carefully selected for design and durability
- Quality 100% wool carpet with heavy duty underlay
- Timber laminate flooring to kitchen and entry foyer
- Quality window treatments, with double track curtains in master bedroom and lounge

Heating

- Rinnai feature gas fireplace
- Ducted Mitsubishi heat pump for winter heating and summer cooling

Kitchen

- Quality appliances, including Fisher and Paykel wall mounted oven, induction cooktop, and double dish drawer
- Engineered stone composite benchtop with undermounted sink, melamine cabinetry, soft close drawers

Bathroom & Laundry

- Under-tile heating to bathrooms
- Tiled shower in ensuite, with level entry access and safely handrail
- Separate laundry

Bedrooms

- Spacious master bedroom suite, including walk-in-wardrobe and private ensuite
- Guest bedroom with in-built robe

Garage

- Internal access single car garage

Outdoor Living

- Sheltered outdoor living with a covered patio adjoining the lounge

Safety & Security

- Gated village community
- Hard-wired smoke detectors
- 24-hour emergency call system



*Plan is subject to final design and council approvals. Villa and apartment styles, location and grounds may be subject to change